

Carestream

ImageView Software
Powered by Eclipse

Advanced. Powerful. Customizable.

See Image Quality in a Whole New Light.



SMART IMAGING SOLUTIONS



Meet the New Gold Standard in Image Processing.

Hospitals, imaging centers, specialty practices and urgent care facilities all have one thing in common: the need for the highest-quality image processing achievable. Our decades of innovation in the radiology field have now yielded the new benchmark in image processing: Eclipse.

Eclipse is the image-processing engine that drives Carestream's ImageView Software. It uses powerful, proprietary algorithms and artificial intelligence to deliver superb image quality and unrivaled diagnostic confidence.

Yet, nearly every facility has another need, too: a preference for particular radiographic "looks" (e.g. image contrast, brightness, sharpness or latitude) for various procedures, body parts and views. Carestream can offer both: pristine image quality, presented with the look and image-processing options you prefer.

Eclipse Image Processing brings fine detail in X-rays to light with extraordinary image quality, consistent presentation and the looks you choose.

Advantages at a Glance

- Uses proprietary algorithms and artificial intelligence to deliver superb image quality for unrivaled diagnostic confidence.
- Incorporates imaging and workflow intelligence to improve the imaging experience for patients and staff.
- Allows customizable "looks" to suit your preferences.
- Offers a wide range of specialized viewing options – Tube and Line Visualization, Pneumothorax and many more.

Transformative Technology and Single-Platform Efficiency.

CARESTREAM ImageView Software, Powered by Eclipse, delivers a single, robust interface, common to all of your Carestream DR Systems – saving time and enhancing ease of use. This takes productivity and patient care to new levels.

Designed to support advanced applications that are becoming the standards for increased diagnostic confidence, ImageView is the software platform for the future.

This innovative platform is available for our DR rooms, mobile systems, retrofits and our CARESTREAM OnSight 3D Extremity System. Its benefits include:

- Carestream's most secure medical device software to date.
- Minimal screen transitions, with most common operations just a single button press away.
- Common user interface across products.
- Advanced applications support.
- Uniform protocols set to your preferences for greater consistency, fewer repeat exams and improved productivity.

A Timely Solution for Hospitals, Clinics and Imaging Centers Alike.

If you're like most imaging operations, the demands on your time and budget are growing. At the same time, you're dealing with many factors that can impede imaging productivity.

With Carestream's Software, you gain the productivity benefits of having multiple Carestream systems in your enterprise powered by a single, feature-rich software platform. A common interface eliminates the time it takes to train radiographers on multiple software platforms. One interface also prevents frequent delays and errors that can occur when radiographers need to stop and re-acclimate each time they switch to a different system.

And here's the biggest benefit of all: ImageView takes multiple interface screens and combines them into a single, integrated screen. This eliminates the need to flip between screens, saving time and accelerating workflow.



Designed to Improve Efficiency and Workflow.

Now that ImageView, Powered by Eclipse, has arrived, it's ready to boost system and staff performance across the board.

- An intuitive and easy-to-use interface simplifies training while optimizing workflow.
- A common user experience promotes efficient cross-product usage by reducing delays and errors while minimizing training costs.
- Automated workflow with uniform protocols set to your preferences provides consistency to minimize repeat exams and improve productivity.

- Carestream's most advanced image processing is embedded to deliver superb image quality for confidence in your diagnoses.
- Its architecture is built to support advanced applications, including Dual Energy and Digital Tomosynthesis, to provide improved diagnostic confidence.†
- Access to RIS and PACS provides immediate availability to additional patient information and reduces the time to complete the study.

† Dual Energy and Digital Tomosynthesis only available on CARESTREAM DRX-Evolution Plus.

This High-Efficiency Interface Saves Time and Effort.

No flipping! Less clicking! New ImageView Software consolidates multiple images into a single view, saving you time and giving you exceptional ease of use.



Patient data, study data and views

Markers, image manipulation/processing tools, formatting and workflow controls

Image viewer and positioning aids



< Detailed patient worklist



> Image acquisition status, including technique and hardware information

Quality Enhancement Features.*

Tech-Assist Chest QA

Contrast Noise Ratio (CNR) notifies the user when the CNR on the acquired image is outside the preset target range. Anatomy Clipping Software uses Artificial Intelligence to outline areas of the chest anatomy that may have been collimated off the image. And our Deviation Index quantifies the deviation of the actual exposure index from the preset target range.

Total Quality Tool

This tool allows for a quick determination of each of your detector's functionality. When incorporated into your facility's QC program, it provides data on your detectors' response over time and allows you to track MTF, CNR and Flat-Field artifacts. Data can be exported into Excel for tracking purposes. This option comes with the software, a flat-field phantom and carrying case.

Administrative Analysis and Reporting

This digital dashboard allows you to analyze and develop improvement plans for your staff and the department. You can track your average exposure rates, rejected images and reasons, detector statistics, including drops, and Total Quality Tool (TQT) QA results.

Workflow Enhancement Features.*

Carestream products are DICOM-compliant and support interoperability in accordance with IHE to address clinical needs in support of optimal patient care.

IHE Scheduled Workflow

ImageView Software saves time and boosts productivity by automatically notifying your HIS/RIS of exam status.

DICOM Modality Worklist

This system facilitates automatic transfer of patient and procedure data to your HIS/RIS system, eliminating manual data entry and increasing radiographer productivity.

IHE Dose Reporting

This system collects and distributes comprehensive dose information to PACS – including DAP values, techniques and exposure indices.

SoftDAP

SoftDAP calculates dose without the need for physical DAP hardware. It utilizes various input parameters including kV, mA, focus, filter-field size and tube to compute and report a DAP value. It complies with the IEC standard and offers performance superiority to that of a DAP meter.

Remote Patient-Data Entry

Patients are your first priority. Let radiographers dedicate more time to them, by making data entry an office-based PC task. Reduces overall radiographer workload, too.

Advanced Trauma Capability

Work faster when every second counts. Gain immediate access to patient records and depend on predefined exam/procedure codes to speed workflow in trauma cases – so you can get patients to treatment faster.

Procedure Mapping

Extra keystrokes add up to wasted time. Preconfigured and dynamic RIS-procedure mapping speeds data entry and workflow. Exam Tutor gives radiographers the flexibility to acquire images in any sequence.

Repeat View

Duplicate a view automatically with the same technique and grid settings to quickly repeat an exposure.

Chest Image Auto-Correct

Save time with software that applies Artificial Intelligence to automatically display chest images in the proper orientation.

Prior Image Review

Retrieve and review images from PACS and copy technique to the current exam.

Long-Length Imaging (LLI) Auto LLI

Capture a wide range of vertebral and long-bone images with your patient in an upright or supine position. The system automatically aligns, captures and stitches the images.

Single-Exposure LLI

Capture long-length images with a single exposure using the CARESTREAM DRX-L Detector. This solution drastically decreases patient hold time, reduces dose, speeds workflow, decreases repeats and allows for a higher level of patient comfort.

Patient CDs/DVDs

Increase your patients' satisfaction. Now they can walk out the door with a CD or DVD copy of their images, including a DICOM viewer to take to their referring physician.



Portfolio-Wide Integration

The ImageView Software Platform is available on all Carestream DR systems. Additional products will be supported in future releases.

 Uses Artificial Intelligence technology.

*Availability of software features and options varies by region and specific Carestream Image Capture Systems. Contact your Carestream representative or dealer for details.

Security and Convenience.

- Microsoft Windows 10 and other built-in “Secure by Design” elements, such as intrusion protection and prevention, make ImageView Carestream’s most secure medical device software.
- Domain Authentication provides centralized user administration using site standards for security. This controls user identities and access with Single Sign-On.

ImageView Software, Powered By Eclipse, Benefits Everyone in your Facility.

- The common user experience reduces training costs.
- Optimized workflow results in higher productivity and ROI.
- Digital Tomosynthesis could free up the CT room for additional patient exams.



Radiology Administrators

- Minimal screen transitions, quick access to frequently used operations and enhanced capabilities optimize workflow.
- The common user experience simplifies training and cross-system work.
- SmartGrid provides improved workflow and easier positioning, and is lighter than a physical grid.



Radiographers

- Advanced image processing delivers superb image quality with consistent presentation.
- Dual Energy and Digital Tomosynthesis provide additional information for improved diagnostic confidence.



Radiologists

- ImageView and Microsoft Windows 10 offer a high level of security.
- Domain authentication provides centralized user administration and access monitoring.



IT Managers



See the Unseen.

Eclipse is the image-processing engine that drives Carestream's ImageView Software. It uses powerful, proprietary algorithms and artificial intelligence to deliver superb image quality and unrivaled diagnostic confidence.



With ImageView, Powered by Eclipse,

you'll also find a new universe of viewing capabilities at your command. Together, they give you unprecedented freedom to adjust, manipulate and view your images in harmony with your preferences – and with each patient's condition. This can culminate, time after time, in elevated diagnostic insight and confidence. Choose from these options:

Image-Processing Options

EVP Plus

Supercharge processing productivity with Enhanced Visualization Processing (EVP) Plus. EVP Plus image processing supports multiband-frequency processing to provide better noise control, sharpness, contrast and density while minimizing artifacts.



Fixed Processing: The baseline look – like analog screen film, it delivers fixed contrast, detail and sharpness



Most Popular: This look offers medium latitude, increased detail and nominal sharpness



Bright Detail: This brighter, sharper, wider-latitude look delivers more soft-tissue detail



Wide Latitude: A slightly darker look, with less soft-tissue detail

Tube and Line Visualization

Be sure with a single exposure. With this feature, a companion image is created with optimized processing for clearer, easier visualization of PICC lines and tubes. It increases confidence that tubes and lines are placed correctly – and remain in position.



Without Tube and Line Visualization



With Tube and Line Visualization

The **CARESTREAM DRX-Revolution Mobile X-ray System** offers robust functionality with our most advanced image processing in a single platform – resulting in ease of use and image quality that can take bedside imaging to new levels.



Image-Processing Options

Pneumothorax Visualization

Save time with software that creates a companion image from the original exposure that is optimized to accentuate the appearance of free air in the chest cavity.



Without Pneumothorax Visualization



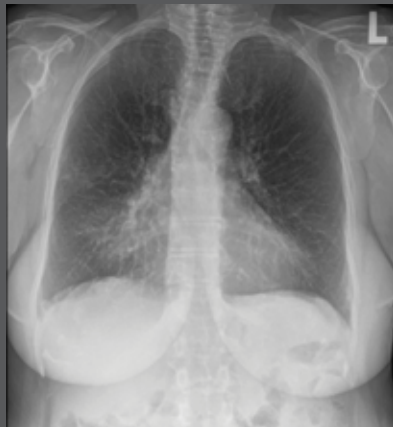
With Pneumothorax Visualization

Bone Suppression

Based on a powerful form of Artificial Intelligence called Random Forests, this tool creates a companion image that suppresses the appearance of bone and enhances the visualization of soft tissue, to increase clinical confidence of pathology assessments. This option also requires no additional exposure to the patient.



Without Bone Suppression



With Bone Suppression

Upgrade your analog X-ray room or mobile unit to DR – easily and economically – with the **CARESTREAM DRX-Transportable System/Lite**. This solution features a wireless tablet operation.



Image-Processing Options

Pediatric Image Optimization and Enhancement

This option provides default acquisition techniques and image-processing parameters optimized specifically for each patient's body size, from the smallest neonatal patient to the largest adolescent. The seven-band multi-frequency processing delivers improved noise suppression and enhances details for more productive pediatric exams.



Without Pediatric Option



With Pediatric Option



Neonate (very low birth weight)
55 kVp, 1.0 mAs,
0.024 DAP, 126 IEC EI



Infant
65 kVp, 0.9 mAs,
0.108 DAP, 209 IEC EI

SmartGrid

SmartGrid processing provides image quality comparable to images acquired with an anti-scatter grid at a reduced patient dose in bedside chest imaging. The benefits of grid-like image quality without the use of an anti-scatter grid can lead to improved workflow and ease of imaging for radiographers.



No Grid



Physical Grid



SmartGrid

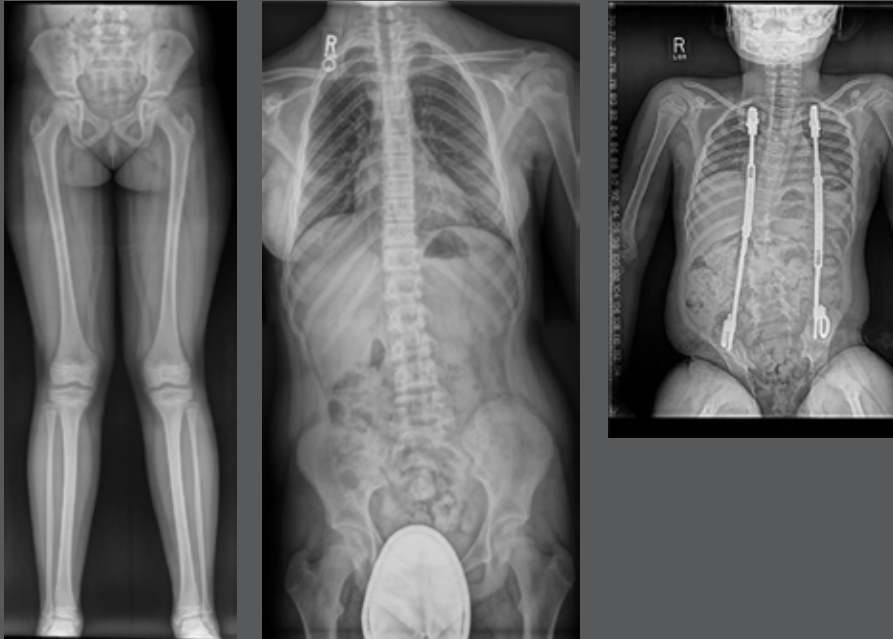
Our portfolio of **DR Detectors** includes wireless, shareable and fixed models to meet your demands based on exam type, detector size, dosage level and budget.



Image-Processing Options

Long-Length Imaging

Capture vertebral and long-bone images – then automatically stitch the images from multiple (up to five) detector acquisitions. This represents a new performance benchmark for speed and efficiency in long-length imaging.



Black Surround

Focus in on the issue. This black surround option masks the white collimated area to eliminate foreground flare. It automatically defines your area of interest and allows manual selection of complex anatomical structures for rapid, accurate collimation verification.

Since its introduction, our flagship **CARESTREAM DRX-Evolution Plus** has set a benchmark for X-ray room imaging performance. The software uses Eclipse Image Processing to deliver pristine image quality that supports accurate diagnoses.



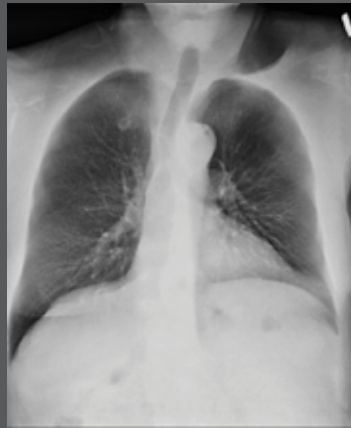
Advanced Applications.*

Dual Energy

This option uses patented differential filtration to subtract rapidly acquired low- and high-energy acquisitions for the generation of bone and soft tissue images. This feature allows for improved detection sensitivity for abnormalities in the lung and improved assessment of bone abnormalities.



Standard Chest X-ray



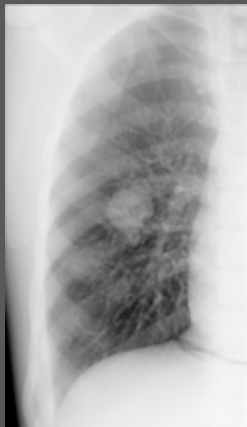
Dual Energy – Soft Tissue



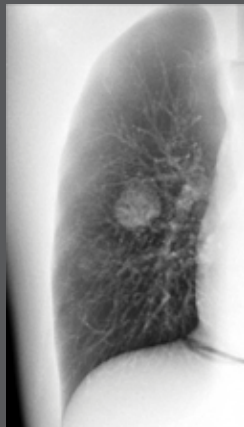
Dual Energy – Bone

Digital Tomosynthesis

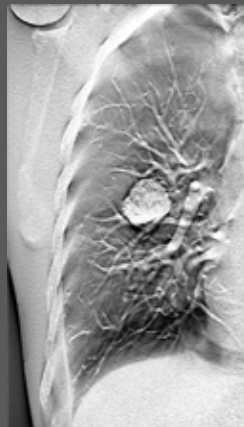
This option separates overlapping structures, similar to CT, but with much higher resolution in the coronal planes. It delivers a much lower dose than standard CT exams and provides better depth localization compared to conventional projection radiography.



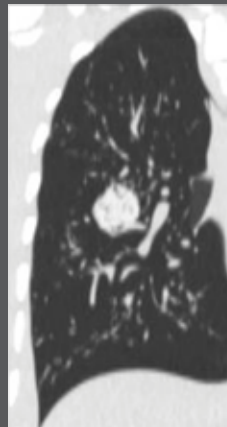
Standard Chest X-ray



Dual Energy
(Tissue Discrimination)



Digital Tomosynthesis
(Spatial Discrimination)



Computed Tomography
(Spatial Discrimination)

*Contact your sales representative for the standard and optional features on specific Carestream products.

NO MATTER WHICH ROAD YOU'RE ON,
WE'LL GET YOU WHERE
YOU NEED TO GO.

SMART IMAGING SOLUTIONS

The Fastest Route to a Successful Imaging Future.

As you travel to the future of imaging, what's your next step? Perhaps you need to accelerate your X-ray workflow. Or add new imaging modalities to your facility to provide better patient care.

Wherever you're headed, we have the smart solutions you need: Full-digital imaging rooms and leading-edge mobile units. Wireless, shareable detectors and CR-to-DR retrofit kits. Affordable CR systems. Advanced digital imagers and our Managed Print Solutions service. As well as additional modalities including extremity CT and fluoroscopy. And as always, the gold-standard in X-ray film technology.

Start Mapping your Route Today.

From small clinics, urgent care facilities and specialty practices to large hospitals and imaging centers, every facility will find a Carestream solution to meet the most specific needs. Visit carestream.com and start your journey to greater productivity and a higher standard of patient care.

Carestream also offers Non-Destructive Testing solutions to help ensure quality and safety in the aerospace, petrochemical and other industries, as well as Contract Manufacturing to bring innovative coated products to market.

A Community of Service and Support.

For dependable service, look to our Customer Success Network. We work continuously to improve your imaging performance, help you to innovate as needs change, and make the most of your budget and resources. Carestream's Customer Success Network surrounds you with a dynamic team of experts, with a Single Point of Entry for easy, customized access to the right people in every situation. You and your patients will benefit from the expertise and best practices only Carestream can deliver.



Eclipse: The New Gold Standard in Image Processing.

Carestream's Eclipse image-processing engine uses proprietary algorithms and artificial intelligence to power our DR and CR software – for superb image quality and unrivaled diagnostic confidence. It's the foundation that enables numerous image-processing capabilities and advanced applications. Harness the power of decades of innovation and explore the new benchmark in Image-Processing Software.

carestream.com/imageview



"Rx only"

© Carestream Health, Inc., 2020. CARESTREAM is a trademark of Carestream Health. CAT 2000 282 10/20

Carestream