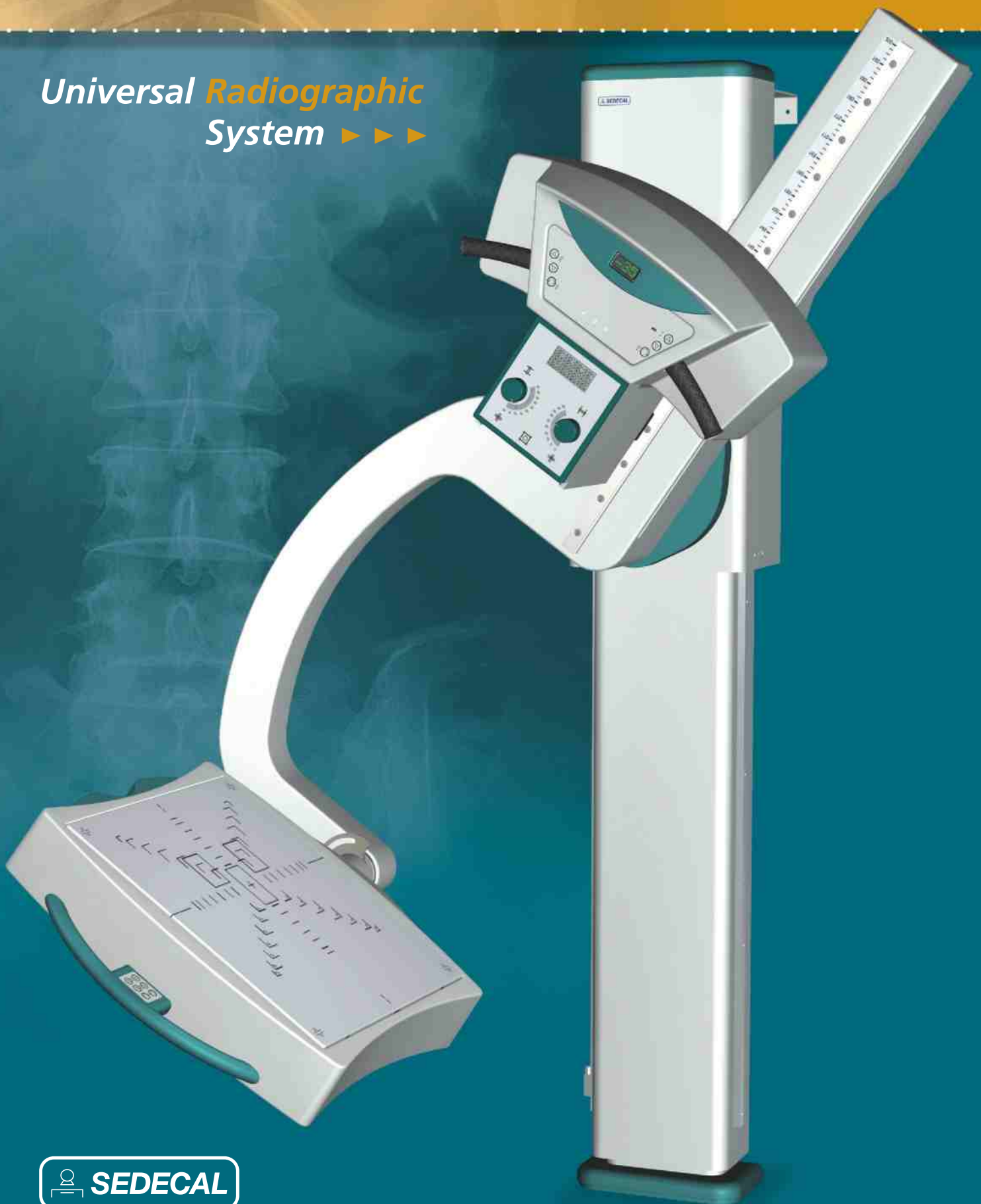
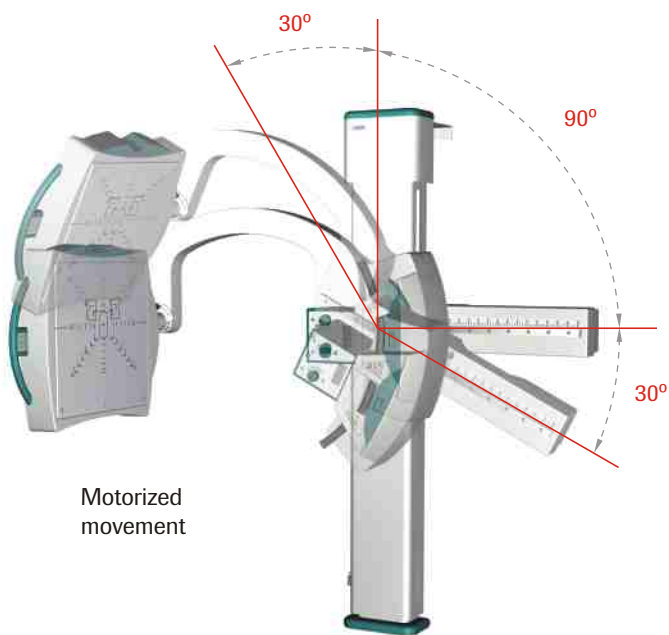


# Sedecal *plus* LP

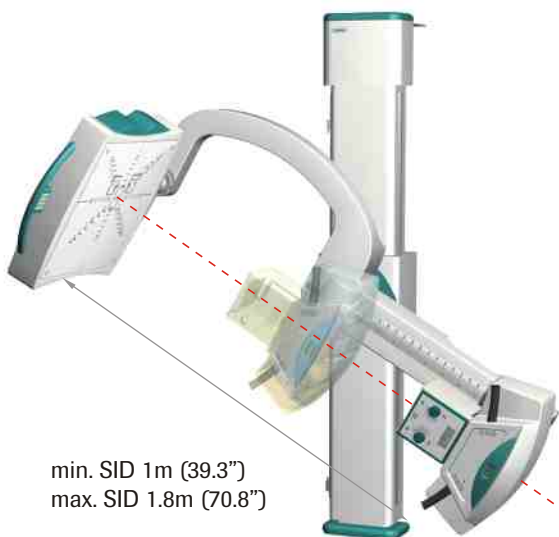
Universal **Radiographic**  
System ▶ ▶ ▶



# Sedecal *plus* LP



Motorized movement



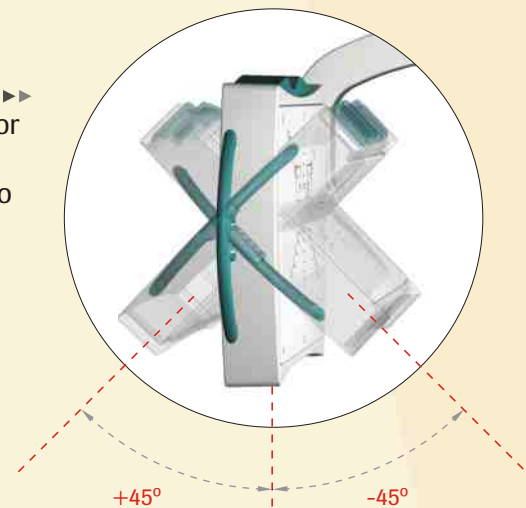
min. SID 1m (39.3")  
max. SID 1.8m (70.8")

Sedecal X plus LP system has been designed as a world-class direct digital imaging systems for use in hospital emergency departments, traumatology and all general radiology applications.

The C-arm design maintains constant alignment between the x-ray tube and image receptor, regardless of C-arm tilt positions or image receptor angle. Its extraordinary flexibility makes the system ideal for all patients in standing, sitting or laying position, including those who are disabled or physically restricted.

All system movements are motorized.

The image receptor rotates within a range of +/- 45° to allow for various studies



**100-180 cm. (40"-72") VARIABLE SOURCE-TO-IMAGE DISTANCE**

The Sedecal X plus LP provides a variable source to image distance (SID) of 100 to 180 cm (40"-72") to accommodate a range of radiographic studies.

The x-ray tube assembly can be easily moved from 100 to 180 cm (40"-72") at any C-arm angle position, by using the operator hand control.



The Sedecal X plus LP C-arm design accommodates cross-table for easy patient positioning.

With the patient table the patient can be moved into any required position without the need for repositioning.

## POSITIONING FLEXIBILITY AND EASE OF USE FOR ALL PROCEDURES

The system's operator-friendly controls dual speed motorized movements, and the intelligent anti-collision system makes the patient positioning quick, easy and safe.

User-friendly console and constant alignment of x-ray table and digital image receptor guarantee efficient and confidence diagnosis.

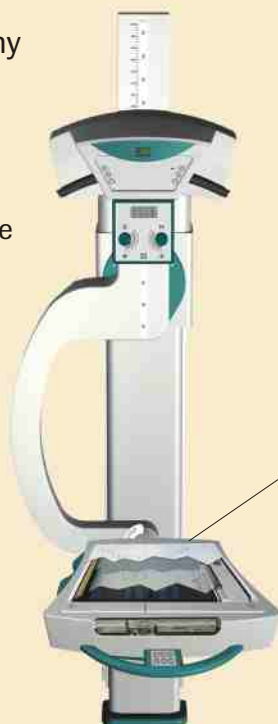


## DIGITAL TECHNOLOGY

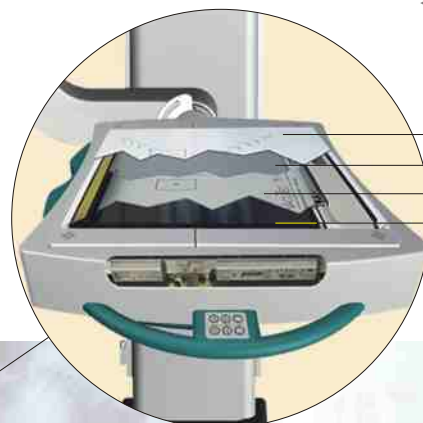
### Advantages of digital radiography

- ▶ Faster exam times, resulting in more patient throughput and increased productivity.
- ▶ Greater visualization of soft tissue and bone from the same study exposure (wide dynamic range).
- ▶ Significant reduction in repeat patient exposures.

Sedecal X plus LP can be equipped with any digital x-ray detector up to 43 x 43 cm. (17" x 17") size.



Digital Detector Assembly



- Front Cover
- Grid
- Ion chamber
- Flat Panel



# SPECIFICATIONS

## BASIC UNIT

Source-to-image distance (SID)	100-180 cm / 39.4"-70.9" continuously adjustable (dual-speed motorized movement)
Power supply	115, 208, 230, 240 VAC; single phase, 1.5 kVA
Dimensions (H x W x D)	2.650 mm x 2.110 mm x 1.680 mm / 104.3" x 83" x 66"

## SWIVEL ARM

	Dual-speed motorized movement (for SID and vertical travel)
Vertical Travel	1.150 mm / 45.3"
Range of rotation	150° (90° +/- 30°)

## BUCKY UNIT

Type - Grid	- digital captor (max. image size: 43 cm x 43 cm / 17" x 17") - range of tilt: +/- 45°
	1) Reciprocating bucky (oscillating grid) (103 lines / Ratio 12:1 / f = 150 cm / 59")
	2) Grid cabinet + non oscillating interchangeable grid
	a) 1st. grid - 180 lines / Ratio 12:1 / f = 100 cm / 39.4"
	b) 2nd grid - 180 lines / Ratio 12:1 / f = 180 cm / 70.9"

## MOBILE PATIENT TABLE

Table-top composition	Laminated structure
Patient capacity	160 kg / 352.7 lb
Dimensions (L x W x H)	2.000 mm x 650 mm x 700 mm / 78.7" x 25.6" x 27.6"

## OPTIONS

Mobile table	Carbon fiber table top - Patient capacity: 200 kg / 441 lb
Collimator	Automatic collimator
Unit fixation system	Floor to ceiling mounting support

## MAIN COLUMN

Floor to wall mounted support  
Dual-speed motorized swivel arm  
vertical movement for effortless  
and accurate setting

## X- RAY GENERATOR

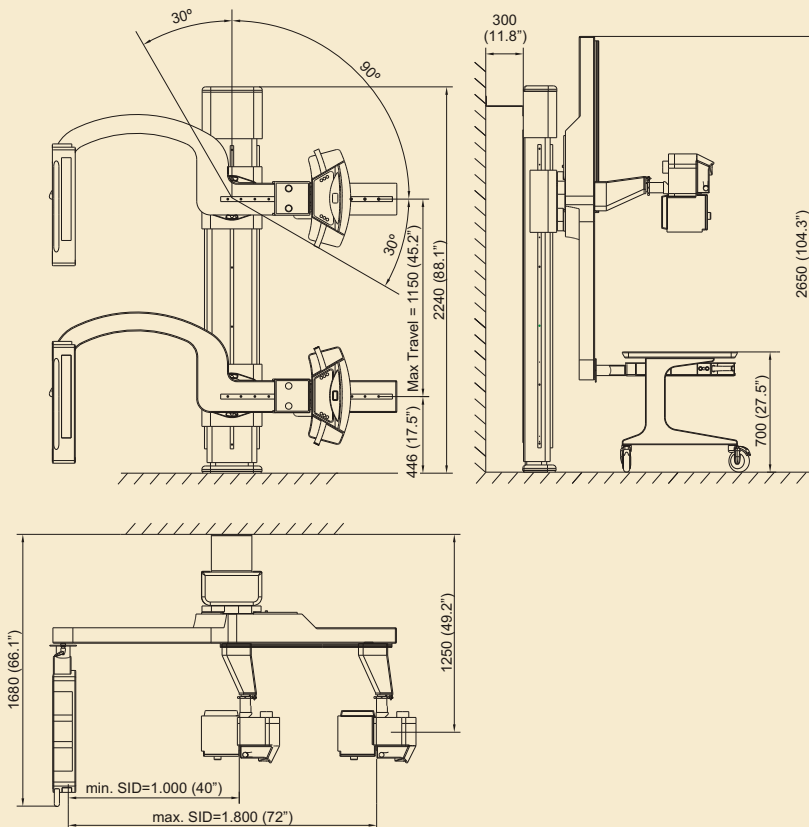
Sedecal Compact X-ray generator  
(line powered / battery powered /  
capacitor assisted)

## COLLIMATOR

- Manual type collimator
- **Linear laser beam** for patient positioning  
in combination with light field indicator
- Rails for accesories
- Measuring tape

## WEIGHTS

- Sedecal X plus LP net wight: 324 kg / 714.3 lb  
(mobile table and digital image detector are  
not included)
- Mobile table net weight: 46 kg / 101.4 lb



Carbon Fiber Table Top  
(Optional Mobile Table)



Stratified Laminated Table Top  
(Standard Mobile Table)



## SEDECAL

Pelaya, 9-Polígono Industrial "Río de Janeiro"  
28110-Algete (Madrid-SPAIN)  
Central Offices:  
Tel.: (34) 91-628 0544 / 91-628 1592  
Fax: (34) 91-628 0574  
Email: marketing@sedecal.com

Factory:  
Tel.: (34) 91-629 0721  
Fax: (34) 91-629 0783  
Email: manufacturing@sedecal.com

## SEDECAL USA Inc

2910 N Arlinton Heights Rd.  
Arlington Heights, Illinois 60004  
USA  
Tel.: 1 (847) 394-6960  
Fax: 1 (847) 394-6965  
Email: sales@sedecalusa.com