

FLUOROSCOPY • RADIOGRAPHY • TOMOGRAPHY • DIGITAL RADIOGRAPHY



EDITOR HFe Series

HIGH FREQUENCY X-RAY GENERATORS

- **Quality & Reliability:**
Stable and proven design. Over 8 years of production and design validation. Thousands installed worldwide
- **Serviceability:**
Modular design repairable to circuit board or component level minimizing service cost and down time
- **Capability:**
Global resources for efficient production and worldwide sales and service support
- **Subsystems solutions:**
Generator plus HV cables, X-ray tubes, detectors and mechanical assemblies

As the world's leading independent manufacturer of X-ray generators and Monoblock[®] X-ray sources, Spellman High Voltage is proud to offer the EDITOR HFe Series of high frequency diagnostic X-ray generators. Spellman is EN ISO 13485 certified company. The certification covers design, development, production, installation service and selling of X-ray generators.

The EDITOR HFe X-ray generator series ranges from 40 to 80kW. These generators are compatible with most X-ray tubes, image intensifiers, flat panel detectors, and have a flexible digital and DR interface. With its' modular construction and flexible design the EDITOR HFe series can be easily installed, maintained and integrated. Full featured Radiographic or R/F control consoles are available as well as anatomic programming and integrated DAP. The EDITOR HFe series is also offered with dual X-ray tube control and high speed starters.

EDITOR HFe 401-HFe 801 Radiographic and Fluoroscopic Generators

Radiographic Mode

The EDITOR HFe Series combines conventional radiographic control and anatomic programming with the latest in automatic exposure control technology and a variety of detector interfaces for the latest in radiographic applications.

- Automatic Exposure Control
- Programmed Organ Library
- Multiple Language Organ Program
- APR Techniques

Fluoroscopic Mode*

The EDITOR HFe Series includes enhanced fluoroscopic control in addition to a digital interface which allows for smooth integration with new dynamic detectors and imaging software.

- Pulsed Fluoroscopy
- High Level Fluoroscopy
- Automatic Brightness Stabilization
- Collimator Control

As the most versatile unit in the HFe Series line-up, the EDITOR HFe 801 offers the upgrades and options needed to meet the requirements of any radiology department or diagnostic imaging center.



Standard cabinet

Output Frequency	100kHz
Output Power	40, 50, 65, and 80kW
Output Voltage	40-150kV
Output Current	
	Radiographic: 10-800mA
	Fluoroscopic: 0.5 to 5mA
	High Level Fluoroscopic: 1-20mA
	Pulsed Fluoroscopic: 10-150mA
Interface	RS-232

Typical Applications

Fluoroscopy
Digital Subtraction Angiography
Digital Spot Film
Serial Radiography
Digital Radiography

Available Options

High Speed Starter
Automatic Exposure Control
Control Consoles
Collimator Power Supply
Bucky Power Supply and Interface

* only available in standard cabinet

EDITOR HFe Series Control Consoles

Radiographic or Fluoroscopic with TV control

- **0-Point Technique:**
Organ selection with or without falling load
- **1-Point Technique:**
Tube voltage can be freely selected with falling load and automatic exposure control
- **2-Point Technique:**
Tube voltage and mA can be freely selected, with or without automatic exposure control
- **3-Point Technique:**
Tube voltage, mA, and exposure time can be freely selected, with or without automatic exposure control



Pre-programmed organ parameters save time and reduce number of repeat exposures

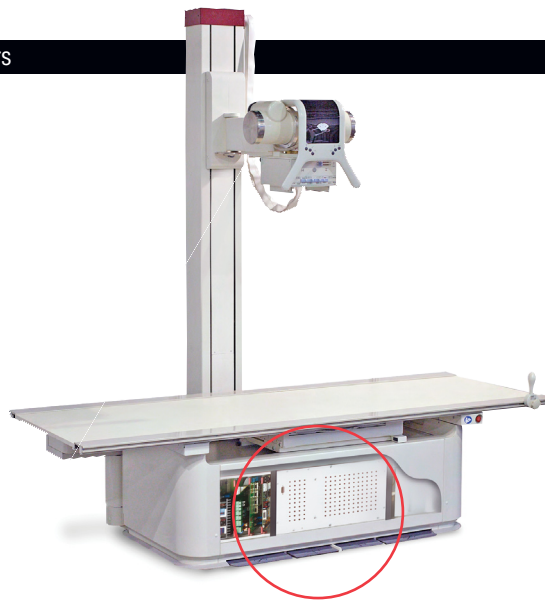
The EDITOR control consoles offer an intuitive approach to the selection of X-ray techniques and imaging control.



EDITOR HFe 401-HFe 801 Radiographic Generators



Optional compact upright cabinet available for 40, 50 and 65kW Radiographic applications



An example of our commitment to advanced system integration is clearly illustrated by our bucky table specific horizontal EDITOR HFe generator.

Output Frequency	100kHz
Output Power	40, 50, 65 and 80kW*
Output Voltage	40-150kV
Output Current	Radiographic: 10-800mA
Interface	RS-232

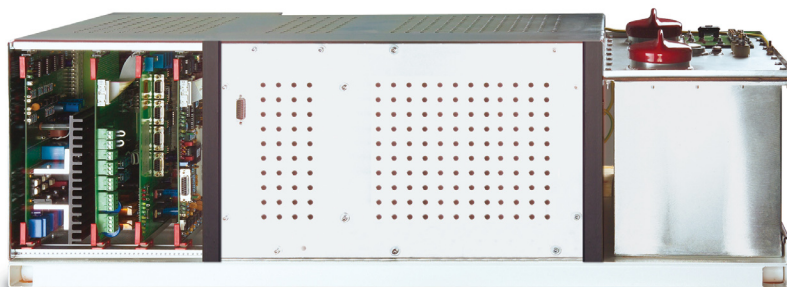
Typical Applications

Serial Radiography
Digital Radiography
Tomosynthesis

Available Options

High Speed Starter
Automatic Exposure Control
Control Consoles
Collimator Power Supply
DR Interface Box
Bucky Power Supply and Interface

* only available in standard and under table cabinet



Optional under table cabinet available for 40, 50, 65 and 80kW Radiographic applications



Compatible Components

The Spellman EDITOR HFe Series of X-ray generators have been developed to be compatible with most X-ray tubes, image intensifiers, flat panel detectors, AEC sensors and buckys.

System Integration

In a continuing effort to provide innovative solutions for our customers, Spellman can also provide fully integrated X-ray subsystems including X-ray buckys, tables and stands for system configurations.



This image shows the integration of our EDITOR HFe generator with a universal X-ray stand

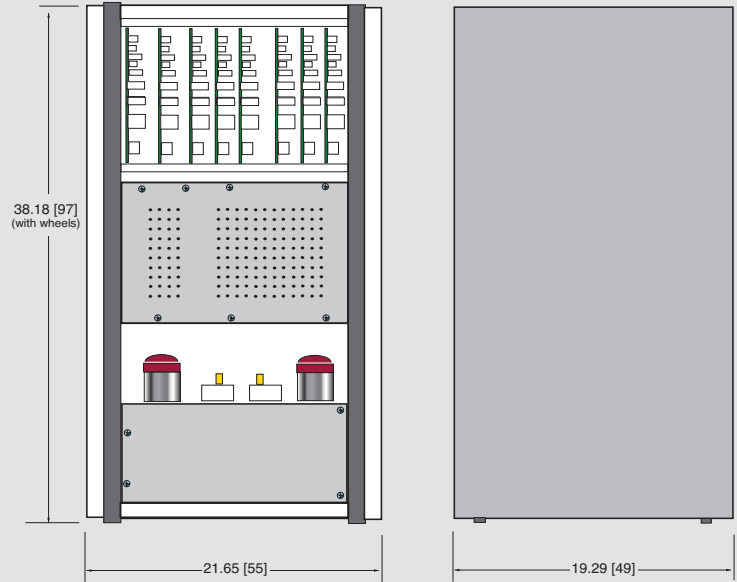
EDITOR HFe 401-801

STANDARD CABINET 266lbs (121kg)

DIMENSIONS: IN. (CM)

FRONT VIEW

SIDE VIEW

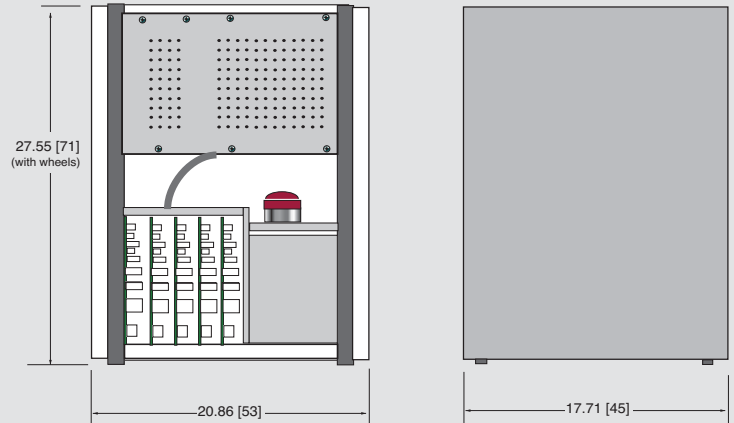


EDITOR HFe 401-601

COMPACT UPRIGHT CABINET 226lbs (102kg)

FRONT VIEW

SIDE VIEW

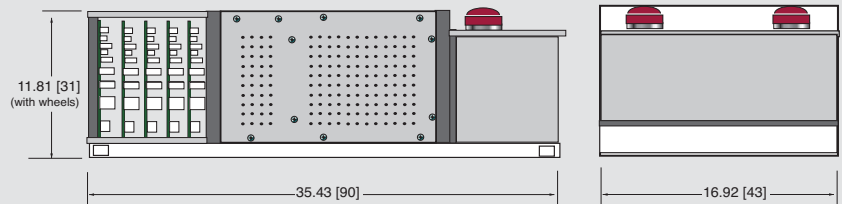


EDITOR HFe 401-801

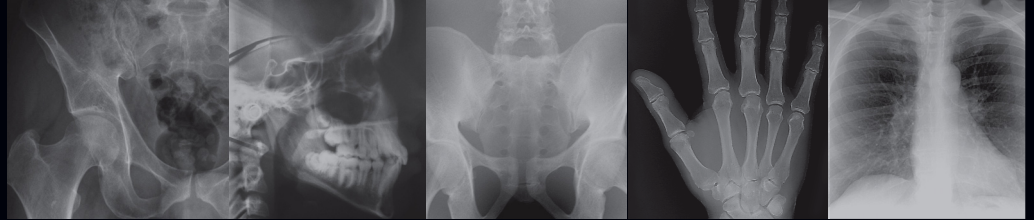
UNDER TABLE CABINET 165lbs (75kg)

FRONT VIEW

SIDE VIEW



SPECIFICATIONS



MODEL	EDITOR HFe 401	EDITOR HFe 501	EDITOR HFe 601	EDITOR HFe 801
Power rating	40 kW	50 kW	65 kW	80 kW ¹
mA / kW at (calculated)	60 kV	500 / 30	630 / 38	800 / 48
	80 kV	500 / 40	630 / 50	800 / 64
	100 kV	400 / 40	500 / 50	650 / 65
	125 kV	320 / 40	400 / 50	520 / 65
	150 kV	266 / 40	330 / 50	430 / 65
Continuous falling load	Yes	Yes	Yes	Yes
Radiographic kV range	40-150 kV	40-150 kV	40-150 kV	40-150 kV
kV steps or in	1kV 27 steps	1kV 27 steps	1kV 27 steps	1kV 27 steps
Radiographic mA and mAs range:				
mA in	10-500 mA 18 steps	10-650 mA 19 steps	10-800 mA 20 steps	10-800 mA 20 steps
ms in	1-6300 ms 38 steps	1-6300 ms 38 steps	1-6300 ms 38 steps	1-6300 ms 38 steps
mAs in	0.5-600 mAs 32 steps	0.5-600 mAs 32 steps	0.5-600 mAs 32 steps	0.5-600 mAs 32 steps
Serial exposure (by external trigger)	50 pulses per second	50 pulses per second	50 pulses per second	50 pulses per second
Output Frequency	100kHz	100kHz	100kHz	100kHz
Fluoroscopic kV range:	40-125 kV	40-125 kV	40-125 kV	40-125 kV
Fluoroscopy mA range:	0.5-5.0 mA	0.5-5.0 mA	0.5-5.0 mA	0.5-5.0 mA
High level fluoro ¹	1-20 mA	1-20 mA	1-20 mA	1-20 mA
Pulsed fluoro ¹	10-150 mA	10-150 mA	10-150 mA	10-150 mA
Max. imaging rate (pulse per sec.) ¹	50	50	50	50
(Fluoroscopy only available in standard cabinet)				
Automatic brightness control	Yes	Yes	Yes	Yes
Dose area product measure systems	Optional	Optional	Optional	Optional
Automatic exposure control ²	Optional	Optional	Optional	Optional
Control Interface	RS-232	RS-232	RS-232	RS-232
Line voltage	400-420Vac, 50/60Hz	400-420Vac, 50/60Hz	400-420Vac, 50/60Hz	400-420Vac, 50/60Hz
Optional autotransformer for AC inputs; 208, 440, 480 Vac. Consult factory for details	Three Phase + neutral	Three Phase + neutral	Three Phase + neutral	Three Phase + neutral
Anatomic programming	Yes	Yes	Yes	Yes
DR Digital interface ³	Yes	Yes	Yes	Yes
External hand switch included	Yes	Yes	Yes	Yes
Applicable standards and regulations	EC Directive 93/42/EEC (CE 0197) Main safety standards:EN 60601-1, EN 60601-1-2 (EMC), EN 60601-2-54			

1. Only available in standard cabinet
2. Digital or Analog Interface
3. Consult factory DR Interface Information

Spellman USA and Corporate HQ

475 Wireless Blvd.
Hauppauge, NY 11788
United States
tel: +1-631-630-3000
fax: +1-631-435-1620

Spellman Valhalla NY USA

One Commerce Park
Valhalla, NY 10595
United States
tel: +1-914-686-3600
fax: +1-914-686-5424

Spellman UK

Broomers Hill Park #14, Broomers Hill
Pulborough, West Sussex,
United Kingdom RH20 2RY
tel: +44 (0) 1798 877000
fax: +44 (0) 1798 872479

Spellman Japan

4-3-1 Kamitoda,
Toda-shi, Saitama-ken,
Japan 335-0022
tel: +81(0) 48-447-6500
fax: +81(0) 48-447-6501

Spellman China

Spellman High Voltage Electronics (SIP) Co Ltd.
Block D, No.16 SuTong Road,
Suzhou Industrial Park 215021 China
tel: +(86)-512-69006010
fax: +(86)-512-67630030

Spellman High Voltage Korea Co.,Ltd.

#B-720, BRC Smart Valley,
Song Do Mirae-ro 30,
Yeonsu-Gu, Incheon, Korea 406-081
tel: +82-32-719-2300
fax: +82-32-720-4300

Spellman de Mexico – Plants 2 & 4

Avenida Pedregal # 2 Esquina
Avenida Chapultepec
Parque Industrial FINSA Oriente
Matamoros, Tamps., Mexico 87340
Tel. +52 868 150-1200

Spellman de Mexico – Plant 3

Avenida Chapultepec # 101 Esquina
Avenida Horizonte
Parque Industrial FINSA Oriente
Matamoros, Tamps., Mexico 87340
Tel. +52 868 150-1200



Spellman Germany

Sales, Service and Manufacturing
Josef-Baumann-Straße 23 D44805
Bochum Germany

Phone +49 (0) 234 879 06 - 0
Fax +49 (0) 234 879 06 - 11

spellmanhv.com

Spellman High Voltage Electronics GmbH,
Bochum operations is EN ISO13485 certified.

Version: 10/2016

Specifications subject to change without notice